



## REDLINE® S 203

### Single gas panel for cylinder/bundle

**Description** S 203 is a panel designed for single cylinders or bundles with diaphragm single-stage pressure regulator, especially suitable for non-corrosive gases up to 6.0 purity (99.9999%) as well as gas mixtures with a low concentration of corrosive components. It is equipped with external gas purging to allow purging of the high pressure side before disconnecting cylinders. It is mounted on a stainless steel console and consists of a pressure regulator, inlet and outlet pressure gauges, a relief valve and shut-off valves for the process gas at high and low pressure ends and for the purging gas.

The panel can also be equipped with contact gauge (C models) for automatic surveillance.

Product name	Material	bar	psi	Art. Nr
S 203	Stainless steel	6	87	6073
S 203	Stainless steel	10	145	6074
S 203	Stainless steel	14	203	6075
S 203	Stainless steel	28	406	6076
S 203/C	Stainless steel	6	87	6077
S 203/C	Stainless steel	10	145	6078
S 203/C	Stainless steel	14	203	6079
S 203/C	Stainless steel	28	406	6080

#### Delivery and ordering information

Single gas panel incl. 1 highly flexible connection coil (or bundle hose) with gas type-specific cylinder connection according to DIN 477 or ISO 5145 and compression fitting in the service gas outlet. In addition to the article number, please specify the type of gas. Other configurations on request.

#### Application

Suitable for all applications in analysis, as well as research and development, where high demands in gas purity, accuracy, reliability are required. Recommended for applications where the gas must be kept free of oxygen and moisture, such as ECD detectors or excimer lasers.

#### Technical Data

	bar	psi
Maximum primary pressure	300	4351
Outlet pressure	6	87
	10	145
	14	203
	28	406
Relief valve pressure	9.2	133.4
	15.4	223.4
	21.6	313.3
	43.1	625.1
Outlet gauge range	0 - 10	0 - 145
	0 - 18	0 - 261
	0 - 25	0 - 363
	0 - 40	0 - 580
Gas purity	≤ 6.0 (99.9999%)	
Leak rate	≤ 10 <sup>-9</sup> mbar l/s He to the outside	
	≤ 5x10 <sup>-6</sup> mbar l/s He in the seat	



Connections		
- Panel		
- Service gas outlet	NPT 1/4" f	
- Relief valve outlet	NPT 1/4" f	
- Purge outlet	NPT 1/4" f	
Flow coefficient	Cv = 0.29; Kv = 0.25	
Materials		
- Casing	Stainless steel	
- Membrane	Hastelloy®	Elgiloy®
- Seat seal	PCTFE	
- Seal relief valve	FKM / EPDM	(according to gas type)
Operating temperature	-20°C ... +60°C	-4°F ... +140°F
Particle filter	Inlet 100 µm – Outlet 100 µm	
Cylinder connection	DIN 477 or ISO 5145	
Weight	7.1 kg max.	15.7 lb max.

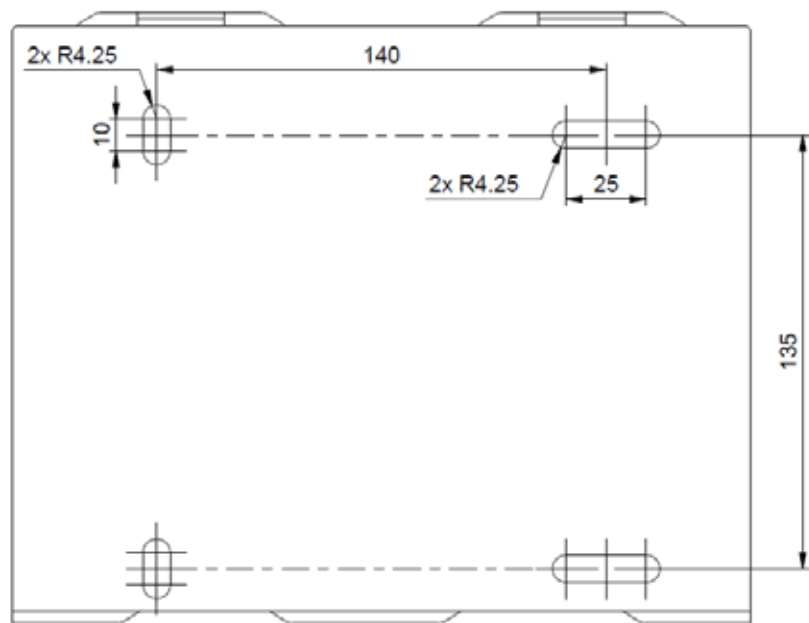
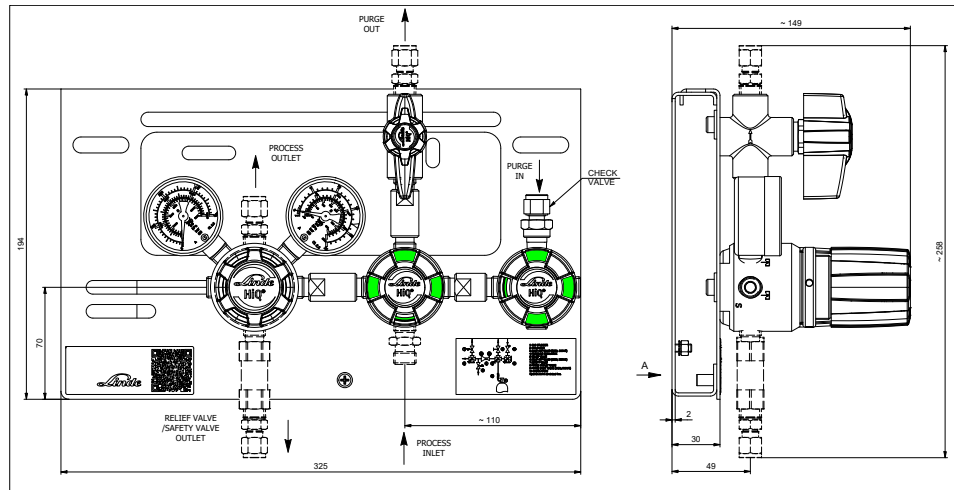
**Other accessories** Gas type-specific connection, coils, bundle hoses, brass or stainless steel compression fittings from 3 to 12 mm or 1/8" to 1/2" for service gas, purge gas and exhaust gas outlets, expansion to 2x2 to 2x4 cylinders, blow-off line, contact pressure gauge, low gas level indicator.

**Quality Assurance** Pressure regulators made of chrome-plated brass are tested according to ISO 7291 (including oxygen burn-out test). Main shut-off valves made of chrome-plated brass have the oxygen burn-out test according to EN ISO 10297. The equipment meets the requirements of DIN EN ISO 80079-36, IEC TS 60079-32-1 and the German TRGS 727. It can be used in EX-Zone 1 and 2 for gases with explosion risk group I, IIA, IIB, IIC. Separate mounting of the base plate. Simple hooking of the pressure control panel into the base plate and secure fastening with one screw. Due to the cut-outs in the front plate, the installed pressure gauges can be changed without dismantling the panel.

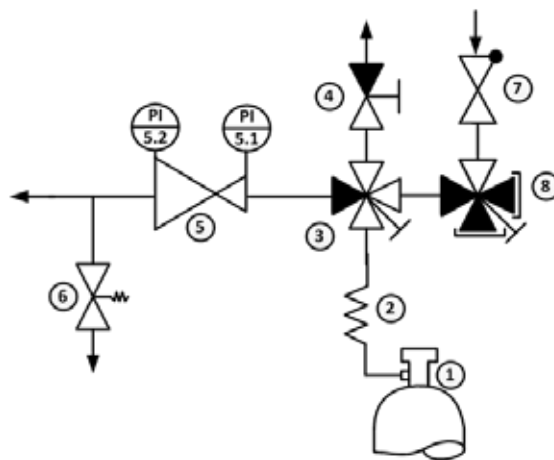
S 203



S 203

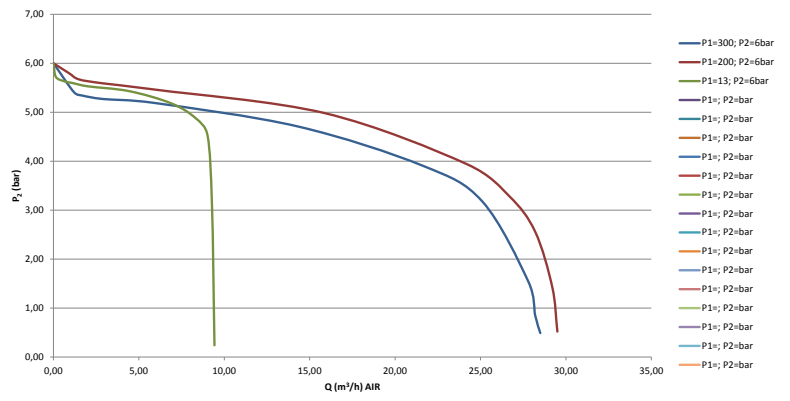


All dimensions in millimeters

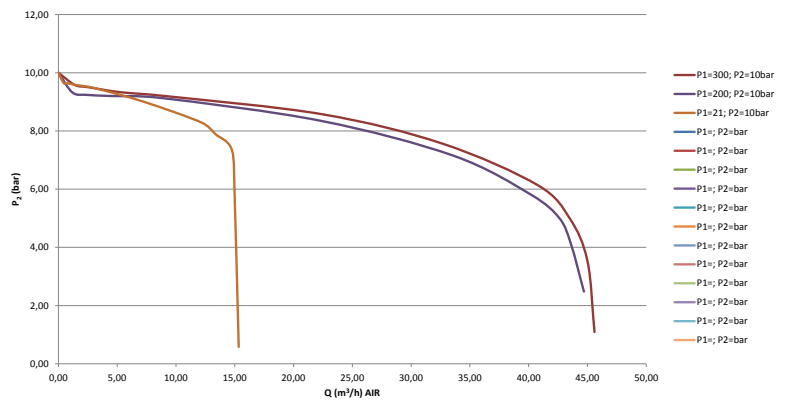


- 1 GAS CYLINDER
- 2 COIL/ HOSE
- 3 SHUT-OFF VALVE (3XIN; 1XOUT)
- 4 PURGE OUTLET VALVE
- 5 PRESSURE REGULATOR
- 6 RELIEF VALVE
- 7 CHECK VALVE
- 8 SHUT-OFF VALVE (1XIN; 3XOUT)

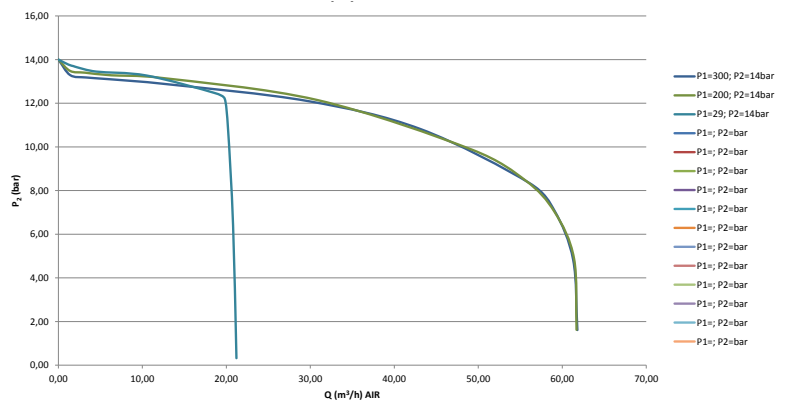
S 203 – 6 bar



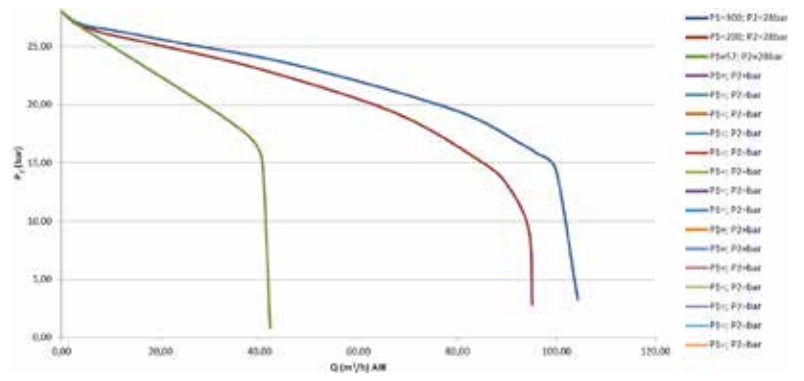
S 203 – 10 bar



S 203 – 14 bar



S 203 – 28 bar



Linde GmbH  
 Dr.-Carl-von-Linde-Strasse 6-14, 82049 Pullach, Germany  
 Phone +49 89 7446-0, Fax +49 89 7446-1230, <http://hiq.linde-gas.com>