



REDLINE® E 300 Extension

Description

E 300 is an extension for a pressure control panel from 2 to max. 4 connections per side (one extension per additional package). It is suitable for non-corrosive gases up to 6.0 purity (99.9999%) as well as gas mixtures with a low concentration of corrosive components. It can work up to 300 bar.

Product name	Material	Length	Art. Nr
E 300	Chrome-plated brass	300 mm	7901
E 300	Chrome-plated brass	1000 mm	7903

Delivery and ordering information

To connect gas cylinders or bundles, a suitable connection coil or bundle hose is required. In addition to the article number, please specify the type of gas. Other configurations on request.

Technical Data

	bar	psi
Maximum primary pressure	300	4351
Gas purity	≤ 6.0 (99.9999%)	
Leak rate	≤ 10 ⁻⁹ mbar l/s He to the outside ≤ 5x10 ⁻⁶ mbar l/s He in the seat	
Flow coefficient	Cv = 0.29 – Kv = 0.25	
Materials		
- Casing	Cr-plated brass	
- Membrane	Hastelloy®	Elgiloy®
- Seat seal	PCTFE	
Operating temperature	-20°C ... +60°C	-4°F ... +140°F
Particle filter	Inlet 100 µm	Outlet 100 µm
Valves	Diaphragm shut-off valve V 300	
Cylinder connection	DIN 477 or ISO 5145	
Weight	1.5 kg max.	3.3 lb max.

Other accessories

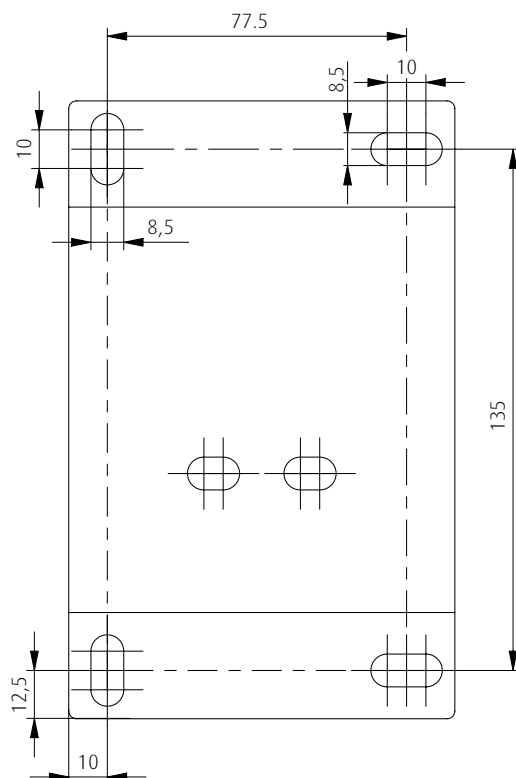
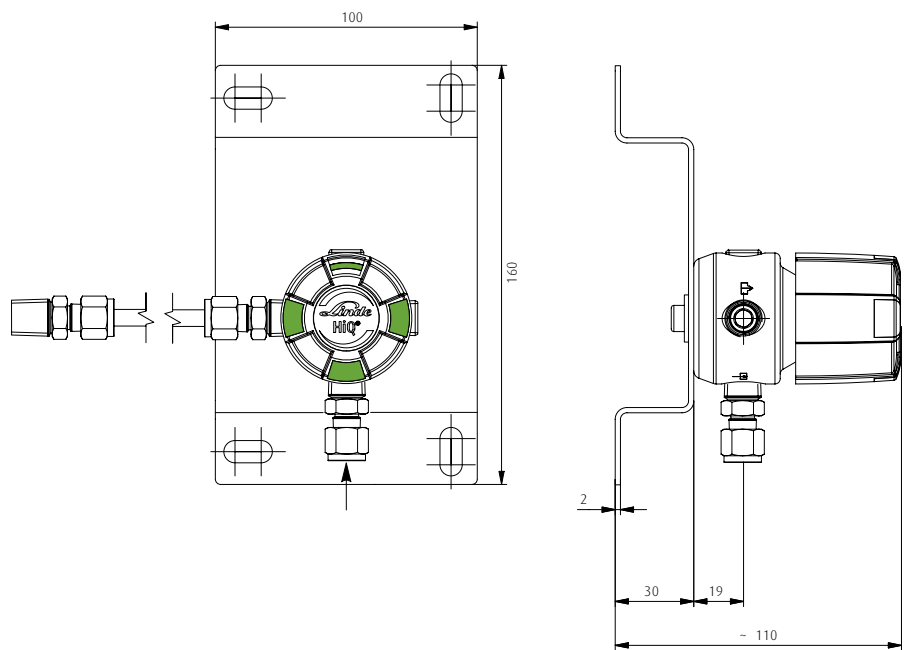
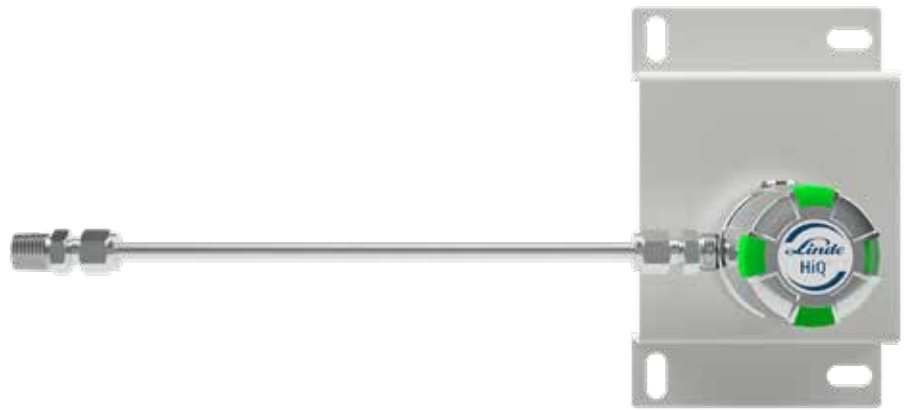
Gas type-specific connection, coils, bundle hoses, brass or stainless steel compression fittings from 3 to 12 mm or 1/8" to 1/2" for service gas, purge gas and exhaust gas outlets, expansion to 2x2 to 2x4 cylinders, blow-off line, contact pressure gauge, low gas level indicator.

Benefits

Main shut-off valves made of chrome-plated brass have the oxygen burn-out test according to EN ISO 10297. The equipment meets the requirements of DIN EN ISO 80079-36, IEC TS 60079-32-1 and the German TRGS 727. It can be used in EX-Zone 1 and 2 for gases with explosion risk group I, IIA, IIB, IIC.

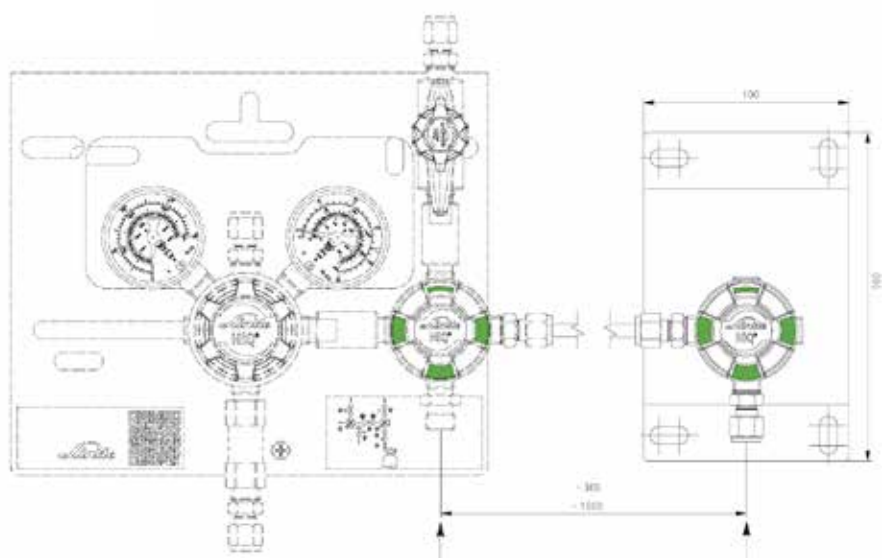


E 300



All dimensions in millimeters

E 300 & S 300



All dimensions in millimeters



Linde GmbH
Dr.-Carl-von-Linde-Strasse 6-14, 82049 Pullach, Germany
Phone +49 89 7446-0, Fax +49 89 7446-1230, <http://hiq.linde-gas.com>