



REDLINE® A 300

Semi-automatic gas panel for cylinder/bundle

Description

A 300 is a double gas panel with diaphragm single-stage pressure regulator, especially suitable for non-corrosive gases up to 6.0 purity (99.9999%) as well as gas mixtures with a low concentration of corrosive components. A 300 is a semi-automatic gas panel designed for uninterrupted gas supply. Switch-over between the two connected cylinders or bundles occurs when the pressure of one side (the primary side) falls below a pre-set pressure level of the secondary side. It is designed for single cylinders or bundle and can work up to 300 bar.

Product name	Material	bar	psi	Art. Nr
Version with connection coil:				
A 300	Chrome-plated brass	14	203	7288
A 300	Chrome-plated brass	50	725	7289
A 300	Stainless steel	14	203	7342
A 300	Stainless steel	50	725	7343
Version with bundle hose:				
A 300	Chrome-plated brass	14	203	7290
A 300	Chrome-plated brass	50	725	7291
A 300	Stainless steel	14	203	7344
A 300	Stainless steel	50	725	7345
Version with connection coil and contact pressure gauge:				
A 300/C	Chrome-plated brass	14	203	7292
A 300/C	Chrome-plated brass	50	725	7293
A 300/C	Stainless steel	14	203	7346
A 300/C	Stainless steel	50	725	7347
Version with bundle hose and contact pressure gauge:				
A 300/C	Chrome-plated brass	14	203	7294
A 300/C	Chrome-plated brass	50	725	7295
A 300/C	Stainless steel	14	203	7348
A 300/C	Stainless steel	50	725	7349

Delivery and ordering information

Double gas panel incl. 2 highly flexible connection coils (or bundle hoses) with gas type-specific cylinder connection according to DIN 477 or ISO 5145 and compression fitting in the service gas outlet. In addition to the article number, please specify the type of gas. Other configurations on request.

Application

Suitable for all applications in analysis, as well as research and development, where high demands in gas purity, accuracy, reliability are required. Recommended for applications where the gas must be kept free of oxygen and moisture, such as ECD detectors or excimer lasers.

Technical Data

	bar	psi
Maximum primary pressure	300	4351
Outlet pressure	14 ± 3 50 ± 8	203 ± 44 725 ± 116
Relief valve pressure	21.6 65	313 943
Outlet gauge range	0 - 25 0 - 65	0 - 363 0 - 943
Gas purity	≤ 6.0 (99.9999%)	
Leak rate	≤ 10 ⁻⁹ mbar l/s He to the outside ≤ 5x10 ⁻⁶ mbar l/s He in the seat	
Connections		
- Pressure reducer body	6 x NPT 1/4" f	
- Panel		
- Service gas outlet	Compression fitting 10 mm	
- High pressure inlet bottle	Connection according to DIN 477 or ISO 5145	
- Relief valve outlet	NPT 1/4" f	
- Purge outlet	NPT 1/4" f	



Stability	1.5 bar outlet pressure when the inlet pressure drops from 300 bar to 0 bar	
Flow coefficient	Cv = 0.29 – Kv = 0.25	
Materials		
- Casing	Cr-plated brass	stainless steel
- Housing seal	PVDF	
- Membrane	Hastelloy®	Elgiloy®
- Seat seal	PCTFE	
- Seal relief valve	FKM/EPDM	(according to gas type)
Operating temperature	-20°C ... +60°C	-4°F ... +140°F
Particle filter	Inlet 100 µm	Outlet 100 µm
Valves	Diaphragm shut-off valve V 300 Diaphragm shut-off valve V 300/4_3110	
Cylinder connection	DIN 477 or ISO 5145	
Weight	8.6 kg max.	19 lb max.

Other accessories Gas type-specific connection, coils, bundle hoses, brass or stainless steel compression fittings from 3 to 12 mm or 1/8" to 1/2" for service gas, purge gas and exhaust gas outlets, expansion to 2x2 to 2x4 cylinders, blow-off line, contact pressure gauge, low gas level indicator.

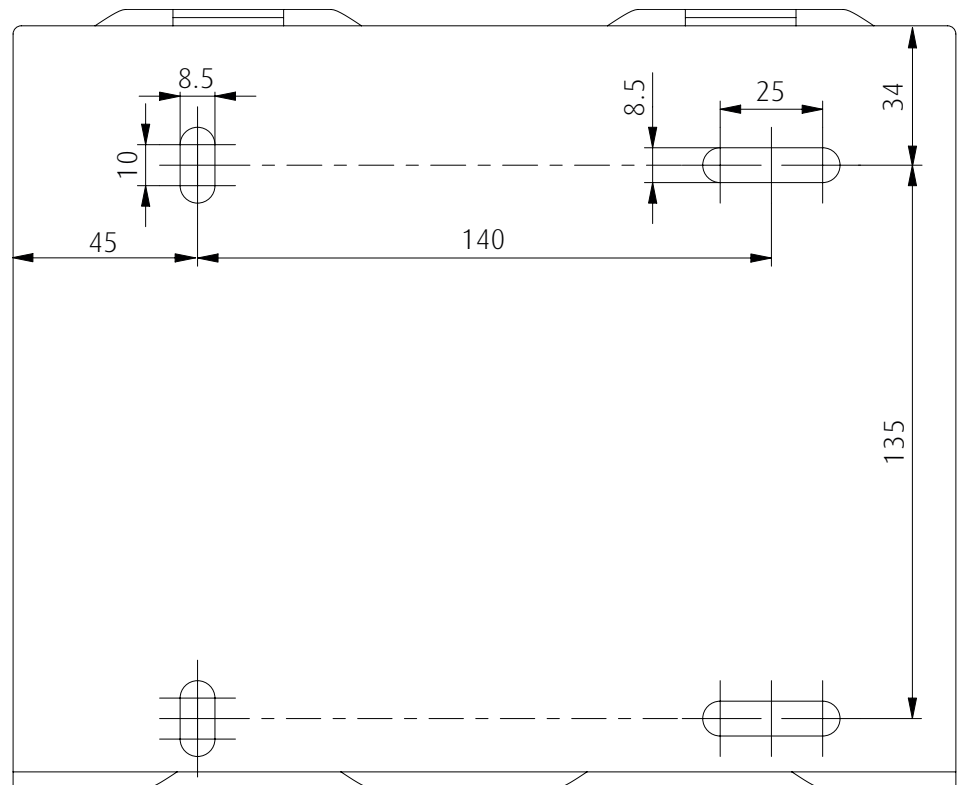
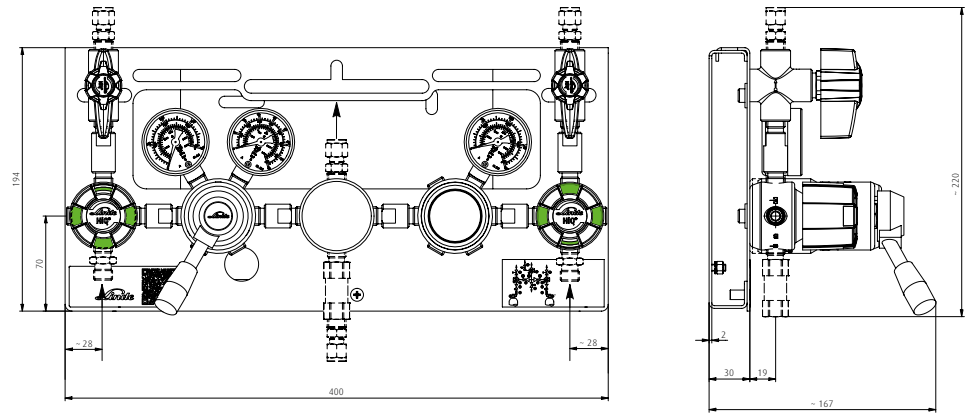
Benefits Pressure regulators made of chrome-plated brass are tested according to ISO 7291 (including oxygen burn-out test). Main shut-off valves made of chrome-plated brass have the oxygen burn-out test according to EN ISO 10297. The equipment meets the requirements of DIN EN ISO 80079-36, IEC TS 60079-32-1 and the German TRGS 727. It can be used in EX-Zone 1 and 2 for gases with explosion risk group I, IIA, IIB, IIC. Separate mounting of the base plate. Simple hooking of the pressure control panel into the base plate and secure fastening with one screw. Due to the cut-outs in the front plate, the installed pressure gauges can be changed without dismantling the panel.

A 300

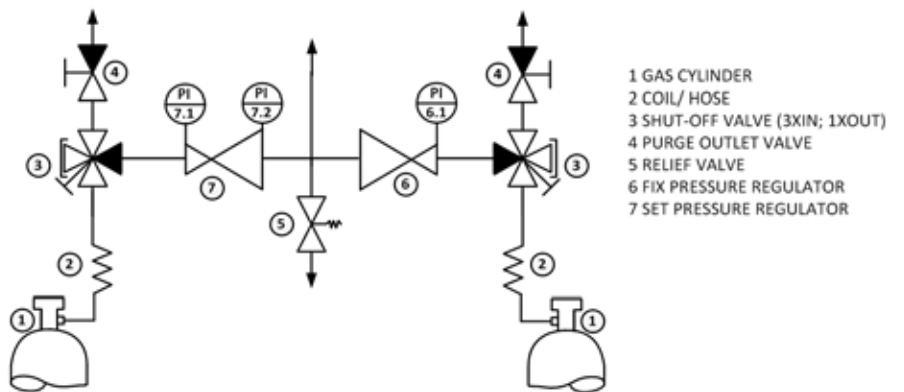


A 300/C

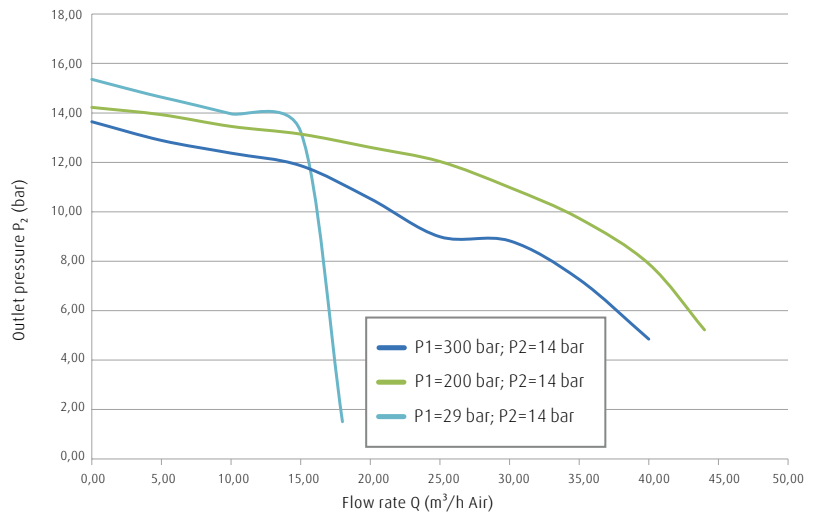




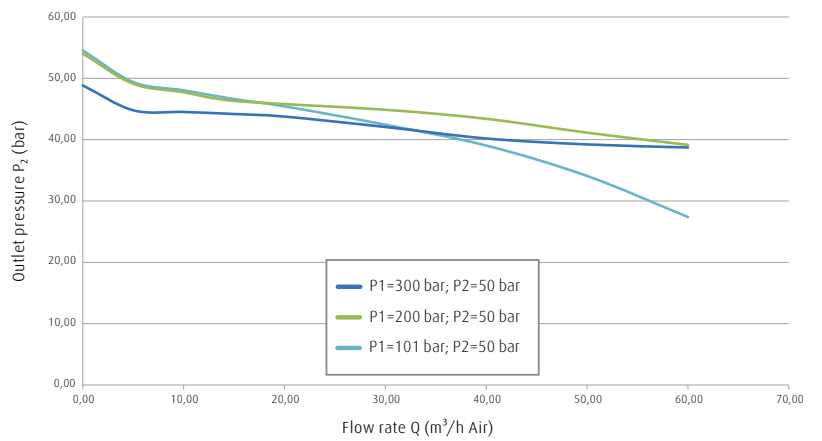
All dimensions in millimeters



A 300 – 14 bar



A 300 – 50 bar



Linde GmbH
 Dr.-Carl-von-Linde-Strasse 6-14, 82049 Pullach, Germany
 Phone +49 89 7446-0, Fax +49 89 7446-1230, <http://hiq.linde-gas.com>